

# WEWORK'S FIRST PARIS LOCATION, LA FAYETTE, IS AN ART DECO TRIBUTE TO 1920S FRANCE

*Well, this is the most glam office we've ever seen.*

BY JENNA MILLINER-WADDELL JUL 13, 2017

95



WeWork / Benoit Florencon

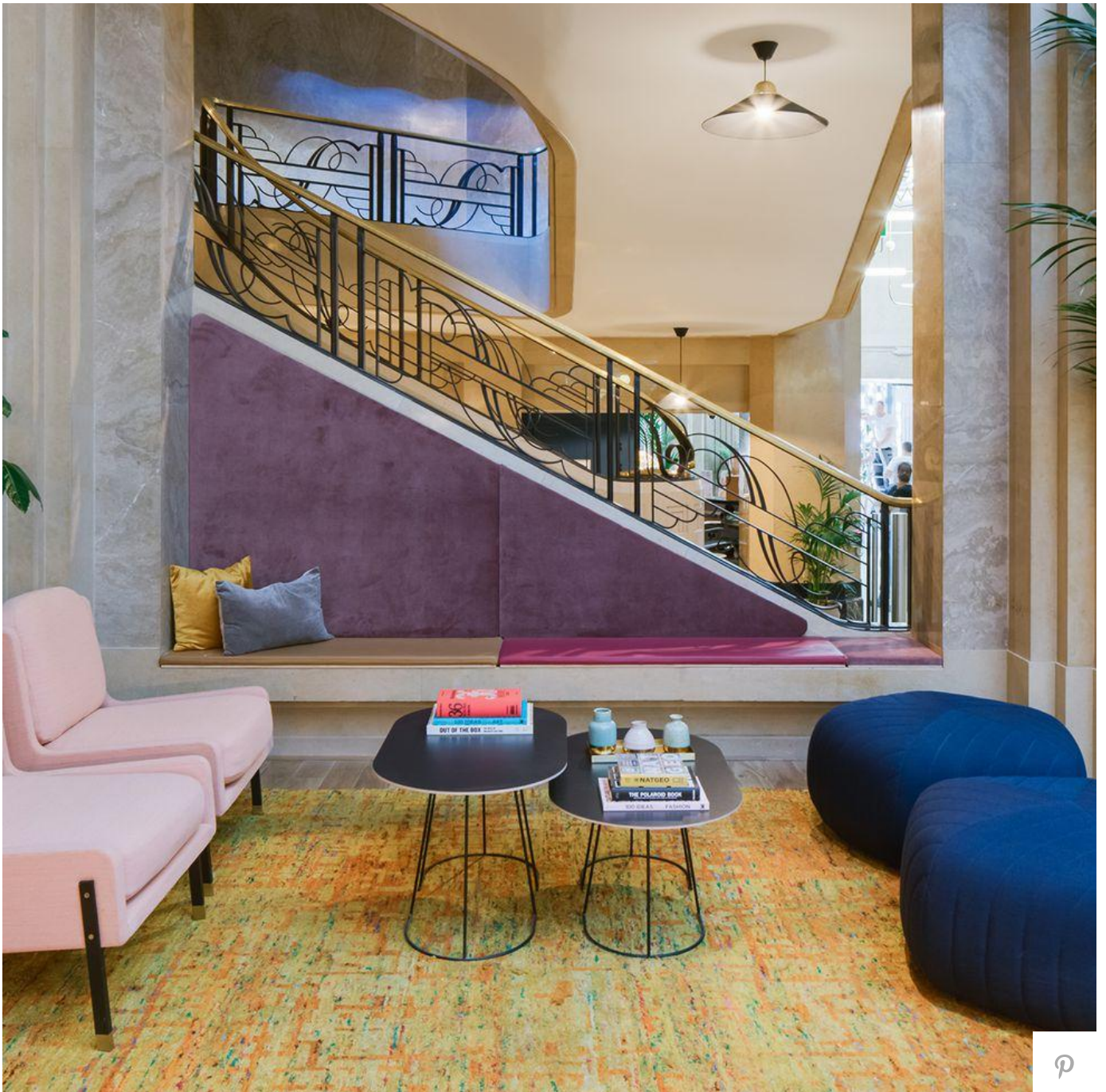


*Années folles*, meaning the “crazy years,” refers to the bohemian lifestyle that emerged in France during the 1920s. The movement encouraged artists, intellectuals, and activists to mingle and debate, so it's no wonder **WeWork** modeled their first Parisian location after this collaborative style.

The start-up, known for creating **co-working spaces** across the world, opened their first Paris location in collaboration with Axel Schoenert Architectes, called **WeWork La Fayette**, this past May.

“We used materials that alluded to opulence of les Annees folles but focused on the concept that WeWork La Fayette would embody the bohemian energy of Paris in the 1920s as a space for our members to meet, create, and collaborate,” the company said in a statement.





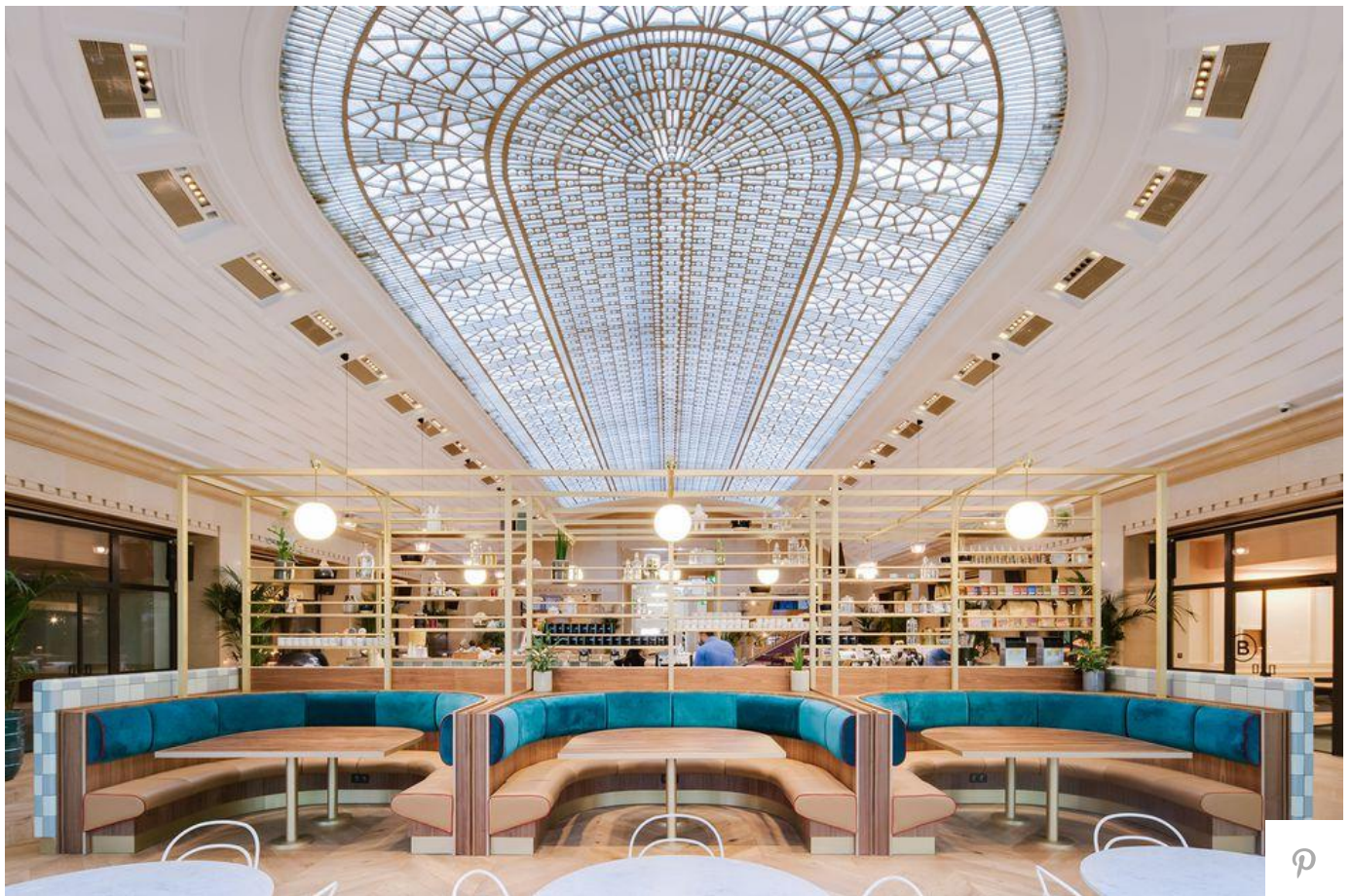


The [office space](#) opens to a grand atrium with 22-foot ceilings serving as the central meeting point for members and guests. While the space is modernized with brushed brass and walnut wood finishes, the history of the circa-1930s building is preserved. The roof boasts the original glass blocks, while the [grand staircase](#), flooring and walls are all original marble and granite.

La Fayette, located in the 9th arrondissement of Paris, employs three types of work spaces: the soft seating area, the main pantry, and the nooks.

The soft seating area features coffee tables, leather sectionals and lounge chairs by MUUTO Oslo. This area is surrounded by bespoke desks by Very Good and Proper that are topped with library-style desk lamps.

Green and white [tiles](#) cover the main pantry, which is defined by a custom brushed brass cantruss that provides statement shelving. On the opposite side, horseshoe banquettes with chestnut brown leather seats and teal velvet backs offer more seating. The space is punctuated by the Art Deco-style rooftop that will surely distract you from your work, even just for a few moments.



WeWork / Benoit Florencon

The jewel-tone palette continues into the semi-private work nooks, painted with [Art Deco](#) geometric patterns and accented with brass, gold and wood. The booths are upholstered in

rose and emerald green velvets and raspberry leather, making for the coziest secret work spot.

While WeWork has over 150 locations in 15 different countries, La Fayette's truly stands out, which can only mean one thing: It's time to go remote, move to Paris, and start living — and working — your best life.